



DCWarehouse Automation for Manufacturing

Let us face the fact that manufacturing in today's competitive Global Economy is not an easy task. America was once a leader in manufacturing but economics, competition and resource factors have changed the playing field—dramatically.

Now more than ever, it is important to look at your company's resources, productivity, supply chain demands and client satisfaction in a different manner. DCSC Inc. has been serving manufacturers and distributors for eighteen years and continues to advance our software to help you gain better visibility and control of your operations. Our software works in real-time while updating one ERP database. All inventory and production data is available for immediate use.

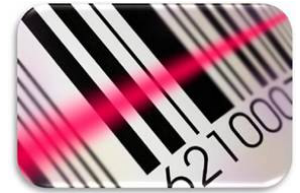
Bring It Back To The Beginning



It all starts with Inventory—whether you produce a very simple product with a single level Bill of Materials or a more complex product with a several level BOM, you need to know **exactly** what you have in stock. Fancy MRP and item planning tools depend on one important factor—accurate inventory. Without that you have **no basis**. By using bar-code and scanning technology within your facility, you will always know exactly what you have on-hand.

Simply put, by using paperless technology throughout your operations you will prevent mishaps such as over ordering materials that tie up your valuable cash on hand or under ordering inventory which effects production and customer satisfaction. You can also prevent having too much inventory that ties up precious space and carrying costs.

Now is the time to prevent mistakes and focus in on areas that “Kill Your Business.” DCWarehouse Automation has features that can bring immediate return on investment to your operations and even novice users can point, scan and click on simple inputs that in turn provide powerful analysis and control.



Receiving

This process is where many inventory mishaps start. By using the DCWarehouse Automation Receiving function, you can scan items in accurately and efficiently. Our optional blind receiving will force your personnel to receive/count all items coming in through your doors. The expected items and counts will be immediately compared to the corresponding purchasing information and even fail or warn you if tolerances are not met. Is your product coming in from overseas? Our special container tracking and receiving will help you understand where your items are and when you can expect their arrival at your facility.

Production and Materials Control

Using real-time data collection makes it easy to record valuable information such as material issues, labor entry, waste and much more. Employees are now held accountable for their time and costs are controlled by using the correct materials for production. DCWarehouse can help you simplify your processes and do more with **fewer resources**. You may even want to take advantage of more advanced features such as the intelligence we built to automatically trigger stock movement to specific work centers based on your production demand. If you find that you'd prefer to do a partial or full back-flush for production this can be done in a simple step from your data collection device.

Customer Service and Fulfillment

Now that you have your production and inventory under control, nothing really matters if your customers are not only retained but satisfied with your products, your customer service and costs.

DCWarehouse starts at order entry wherein one time set-ups for repeat customers know how they like their packing slips to look, their products labeled, their preferred shipping method and when you promised their order to arrive at the correct destination. With our completely seamless program—everything from order entry through pick/pack/ship is working in **real time**. Sales Order Items are tracked in detail whether they are shipped in small boxes or very large pallets.

Our technology ensures you ship the right products, in time to the designated location. By **eliminating** third party shipping software with our own package manager you avoid double entry, data-confusion and costly mistakes.

When orders ship out your clients are informed immediately of their shipment, the carrier, tracking numbers, and additional important information.

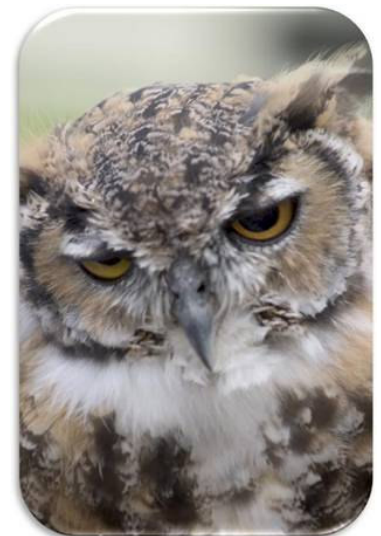
With built in ASN (Advanced Shipping Notification) functionality, you will be able to pass important EDI Information **without having to re-key the data**. The DCPackage Manager is one of the most cutting edge packaging and shipping solutions in today's market. Most companies must use several software applications from various vendors to achieve this closed loop functionality we have built into one seamless application.

Cycle Counting, Transfers, Bin Replenishment, Move Stock and much more functionality is found in our user friendly software. Furthermore, our software has many of the Tier One Software Solution features without the expensive price tag and ongoing maintenance, development and integration fees.

Are You Looking to Improve
Your Manufacturing Operations
with **Real-Time** Visibility, Inventory and
Production Control?

Do you need exact details on the
who, how many, when and where?

Find out more today by
calling your local
DCWarehouse Automation Reseller or
call us today, 314-664-2200.
Learn More By Visiting
www.dcscorp.com/manufacturing.html



Disclaimer: Sage Software, the Sage Software logos and the Sage Software product and service names mentioned herein are registered trademarks or trademarks of Sage Software or it's affiliated entities. All trademarks are the property of their respective owners.

DCSC Inc. 2006-2010 All Rights Reserved