

## DCWAREHOUSE AUTOMATION Credit Card Processing Made Easy

Studies show more companies and individuals prefer to use credit cards for purchasing over the internet and phone when ordering products. Can you imagine authorizing your customer's credit card at the time of order entry in a quick and efficient manner?

You can with the **DCWarehouse Automation Credit Card Module**. This solution works seamlessly through order entry and pick/pack/ship allowing you to quickly settle right at the time of shipment. This is a proven and mature solution that is used by our valuable clients.

Written with .NET tools using PayPal™, one of *the* most popular credit card processors. You will find important features such as off-site credit card storage for additional security, credit card masking in database, ACH Transactions, multiple captures per authorization, the ability to accept installations and the option to settle the payment right at the time of shipping.

The solution also allows you to reference transactions (not the actual credit card number) to provide a seamless yet secure way for you and your customers to do business.

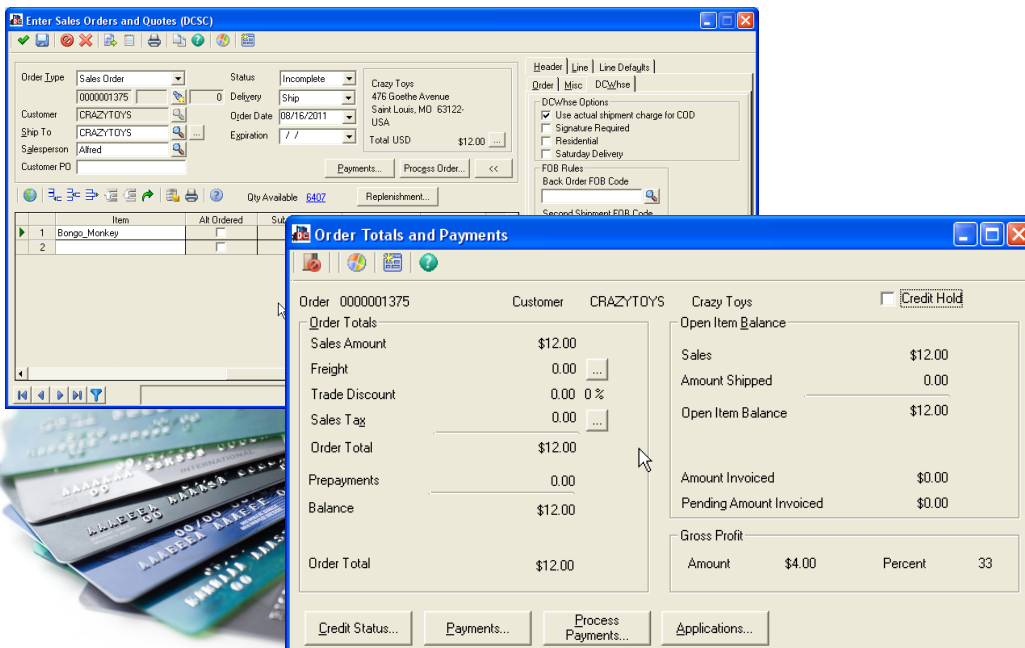


### DCWarehouse Automation Credit Card Processing

- Do you want to provide your customer's with a more convenient way to pay?
- Are you looking to authorize customer credit cards at the time of order entry?
- Do you want to improve efficiency and save time and money?

If you answered **YES** to any of these questions, then you need **DCWarehouse Automation Credit Card Processing**.

**Contact Us Today and Learn More.**



*Continue Reading >>>*

**Call for a Demo!  
(314) 664-2200**

## DURING THE ORDER ENTRY PROCESS YOU CAN ...

- **Save Transactions without Submitting:** Commonly used for small dollar amounts where you want to note that it is a credit card transaction but don't really want to process an authorization request.
- **Get Authorization Only:** When choosing this option and hitting the Submit button it will put a hold on the amount listed in the Amount box and will give you an approval number in the payment processing screen. This process calls out to VeriSign in real-time.
- **Pre Authorize an Amount:** You can edit the dollar amount in this field. An example would be if you want to increase the amount for an estimated handling or freight charge that is not yet on the order.

Once the process is complete, exit the Payment Processing Screen and then save the order.

Also keep in mind that if you try to exit a credit card order without completing this information it will automatically prompt you with the credit card authorization screen. Special features exist such as saving your customer's credit card information (masked for security) for repeat orders.

## NEXT YOU PICK/PACK/SHIP YOUR ORDER THROUGH THE NORMAL PROCESS.

This intuitive application is smart enough to stop you from picking the order if it has changed or is on credit hold. If everything is ok, you then have the option to settle and invoice right at the time of shipment. If your business process requires you to settle at a later date, you have that option available.

The credit card processing allows you to automatically process a second shipment credit card transaction without having to get a new credit card authorization. This will prevent delayed shipments due to a missed authorization. This will also improve efficiency and will save time from users having to monitor the credit card authorizations on orders.

## DCCredit Card can also be tied into your Web Store Front with Several Options.

*"Using the DCCredit Card Module, allows our company to convert orders to cash with ease!"*  
- Happy Distribution Client, FL



**Learn More About DCWarehouse Automation!**

[www.DCSCcorp.com](http://www.DCSCcorp.com)

